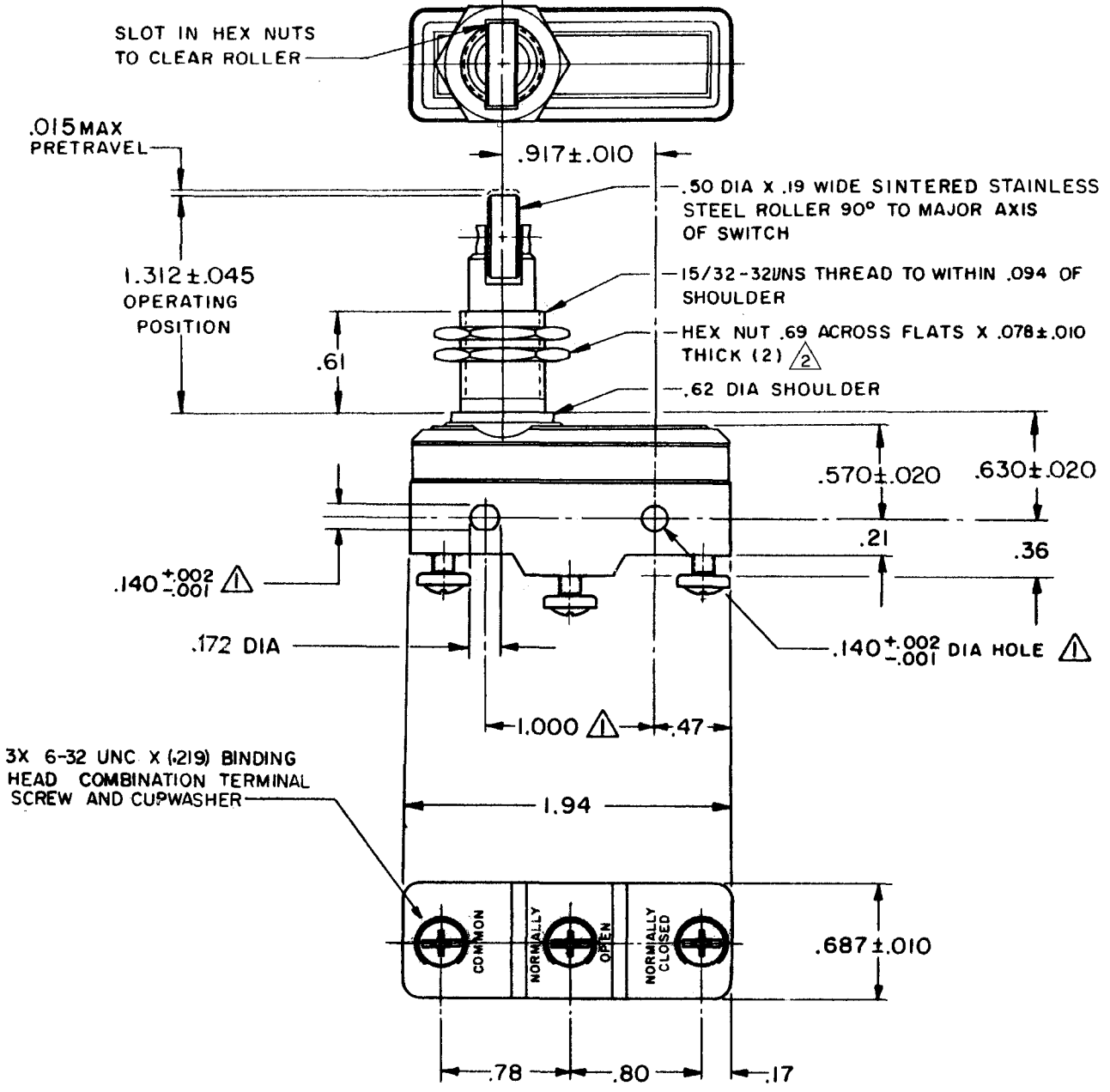


BZ-2RQ181-A2
 PAGE 1 OF 1
M
 DRAWING NUMBER
 ISSUE 10
 REVISIONS
 A CO17410 JAN 27 JUL 64
 B CO26132 MBS 21 JULY 69
 C CO-73287-B DHD 17 MAY 93
 D CO-77589 KDR 29 MAR 94
 E CO-77426-B DLT 29 JUN 94
 F CO-82133 CSL 1 AUG 96
 G CO93346 DLT 11 SEP 98
 H 0015139 TSG 23AUG05
 FORMTEK FC-50378
 DRAWN
 J A N 27 J U L 64
 CHECK
 D A W
 R E L E A S E N O .
 R J
 C H E C K
 23 A U G 05
 C H E C K
 11 A U G 64
 C H E C K
 64
 R E P L A C E S
 R E L E A S E N O .
 R J
 C H E C K
 23 A U G 05
 C H E C K
 11 A U G 64
 C H E C K
 64



NOTES
 1 MOUNTING HOLES WILL ACCEPT PINS OR SCREWS OF .139 MAX DIA ON 1.000±.002 CENTERS
 2 HARDWARE FURNISHED UNASSEMBLED

THIS DRAWING COVERS A PROPRIETARY ITEM AND IS THE PROPERTY OF MICRO SWITCH, A DIVISION OF HONEYWELL. THIS DRAWING IS NOT TO BE COPIED OR USED WITHOUT THE APPROVAL OF MICRO SWITCH.

CHARACTERISTICS	ELECTRICAL DATA	SCALE FULL
OPERATING FORCE-----9-13 OZ	CONTACT ARRANGEMENT S P D T	DO NOT SCALE PRINT
RELEASE FORCE-----4 OZ MIN	-L96- 15A-125, 250, OR 480 VAC	UNLESS OTHERWISE NOTED
DIFFERENTIAL TRAVEL-----.0004-.0020	1/2 A-125 VDC; 1/4 A-250 VDC	DIMENSIONS ARE IN INCHES
OVERTRAVEL-----.140 MIN	-L288- 1/8 HP-125 VAC; 1/4 HP-250 VAC	TOLERANCES ARE:
	-L306- CE EN05 SP RU	ONE PLACE (.0) ±.030
	-L315- 16A 250V T85 5E4	TWO PLACE (.00) ±.015
		THREE PLACE (.000) ±.005
		ANGLES ±.05
		WEIGHT .14 LB MAX